

CLUTCH PEDAL REMOVAL/INSTALLATION

B3E051041030W02

1. Remove the battery and battery tray.

(See [BATTERY REMOVAL/INSTALLATION \[ZJ, Z6\]](#).)

(See [BATTERY REMOVAL/INSTALLATION \[LF\]](#).)

2. Separate the steering shaft.

3. Separate the clutch pipe and reserve hose.

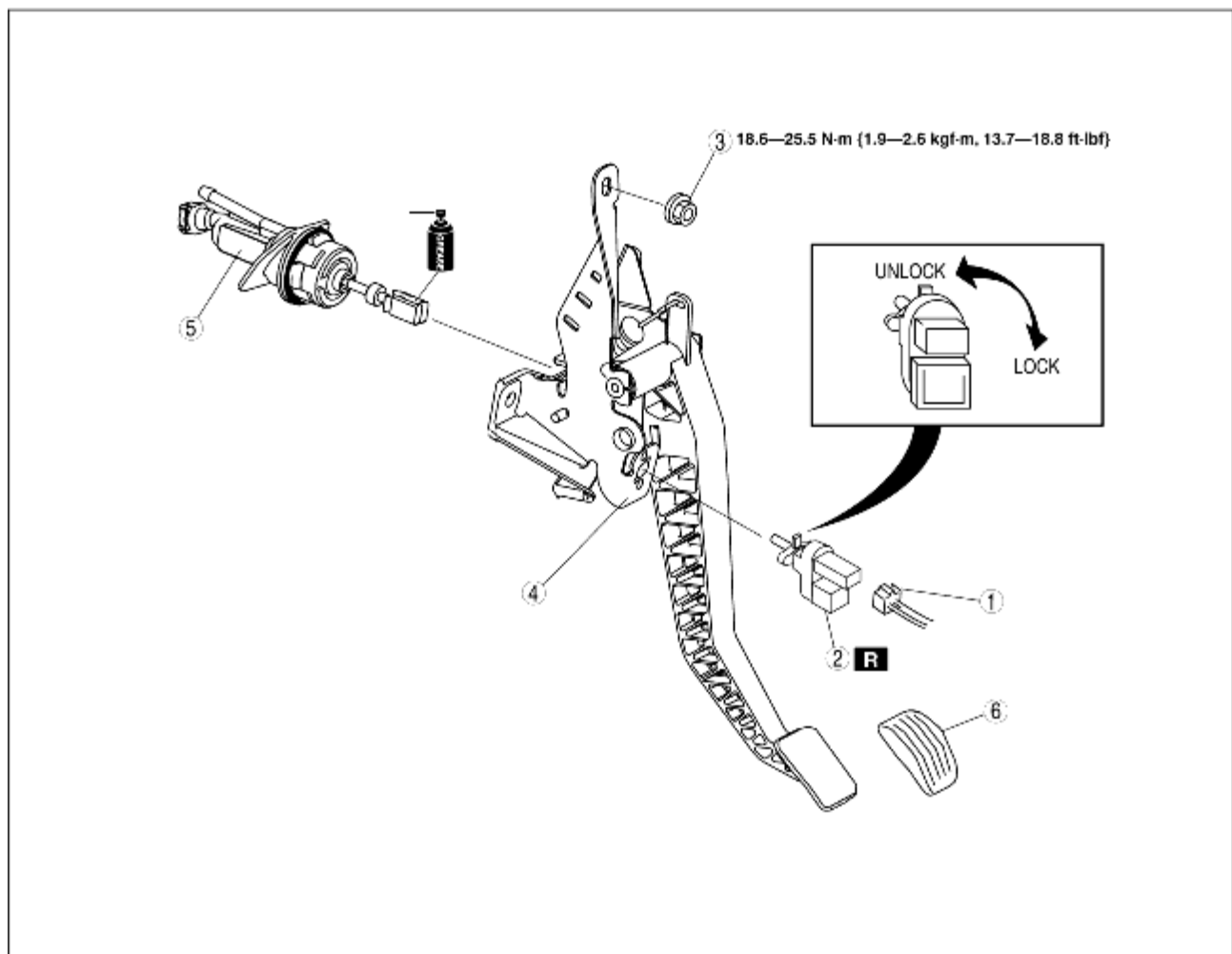
(See [CLUTCH MASTER CYLINDER REMOVAL/INSTALLATION](#).)

4. Remove in the order indicated in the table.

5. Install in the reverse order of removal.

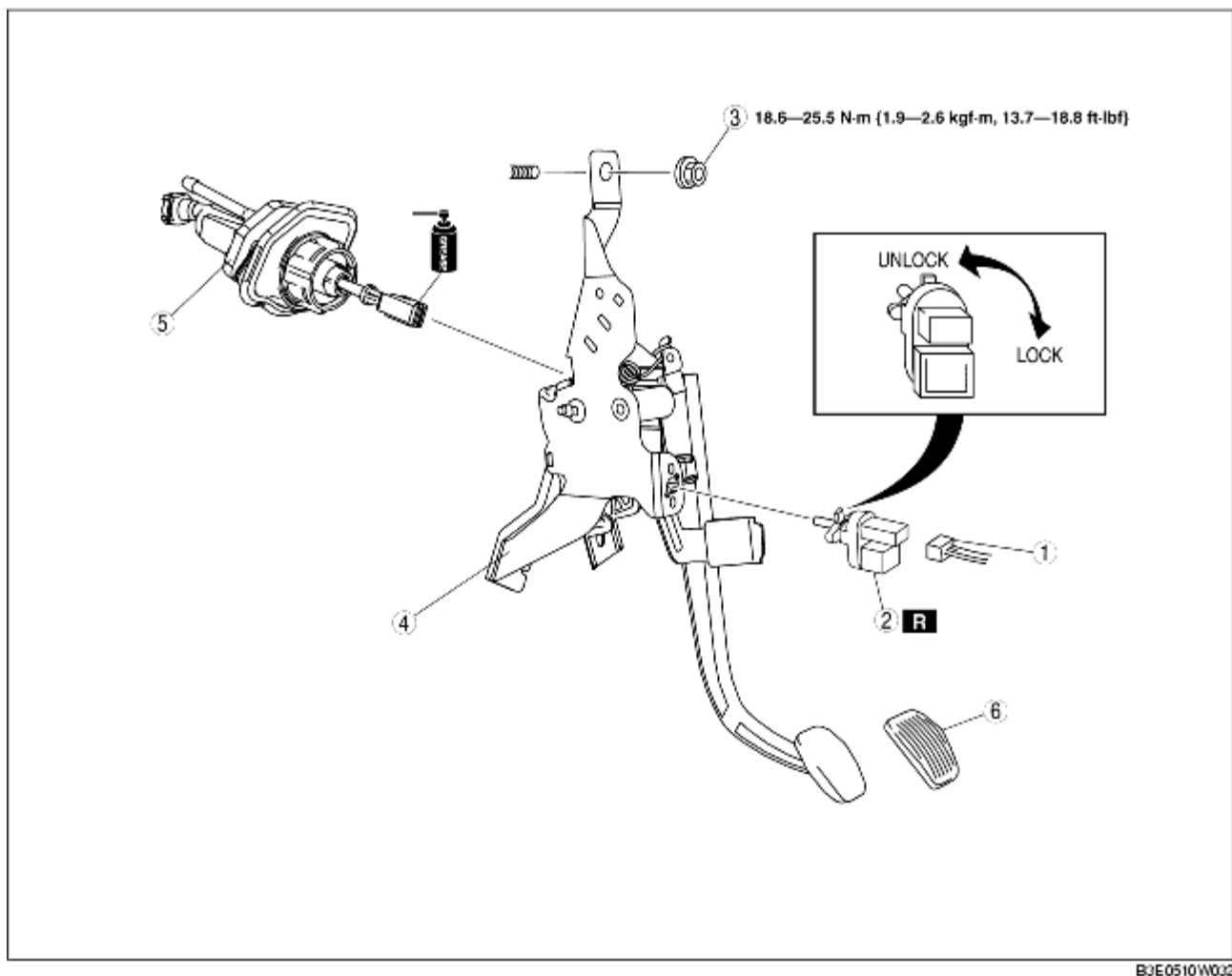
6. After installation, inspect the clutch pedal. (See [CLUTCH PEDAL INSPECTION](#).)

L.H.D.



B3E0510W001

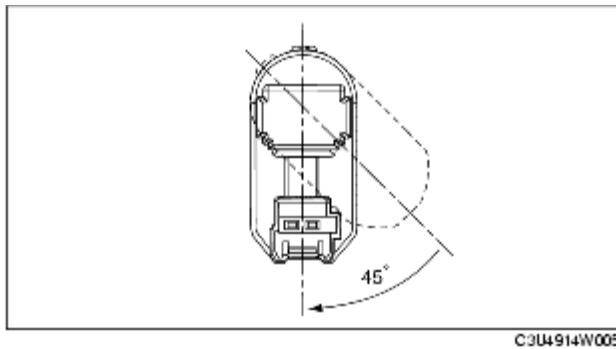
1	Clutch pedal position switch connector
2	Clutch pedal position switch (See Clutch Pedal Position Switch Installation Note.)
3	Nuts
4	Clutch pedal component
5	Clutch master cylinder (See CLUTCH MASTER CYLINDER REMOVAL/INSTALLATION.)
6	Pedal pad

R.H.D.

1	Clutch pedal position switch connector
2	Clutch pedal position switch (See Clutch Pedal Position Switch Installation Note.)
3	Nuts
4	Clutch pedal component
5	Clutch master cylinder (See CLUTCH MASTER CYLINDER REMOVAL/INSTALLATION.)
6	Pedal pad

Clutch Pedal Position Switch Installation Note

1. Insert the new clutch pedal position switch into hole of the pedal bracket until the switch stops.
2. Rotate the clutch pedal position switch **45°** clockwise.



3. Verify that the clutch pedal position switch is locked securely.